

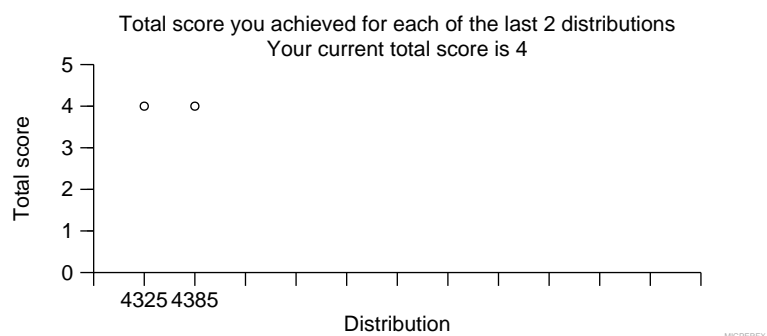
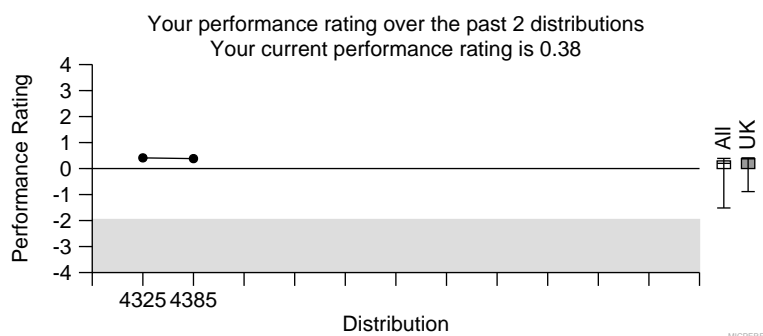
Intended Result	Your Report	Your Score
Specimen 4697 Hepatitis E RNA detected	Hepatitis E RNA detected	2
Specimen 4698 Hepatitis E RNA detected	Hepatitis E RNA detected	2

**Cumulative score information**

Total number of specimens sent to you for **UK NEQAS for Molecular detection of HEV RNA** over the last 3 distributions is 6  
 For these distributions specimen numbers 4520 4521 4697 4698 have been analysed and scored.  
 Number of reports analysed 4  
 Number of specimens reported as not examined (not scored) 0  
 Number of specimens received too late for analysis (not scored) 0  
 Number of specimens for which no report was received (not scored) 0  
 Your cumulative score for these specimens was 8 out of a possible total of 8  
 The mean score calculated from the reports returned by **UK** laboratories was 7.51 (with a standard error of 1.28)

**Performance rating**

Your performance rating for **UK NEQAS for Molecular detection of HEV RNA** (i.e. the number of standard errors by which your cumulative score lies above or below the mean) for **UK** laboratories is 0.38.  
 A performance rating of more than 1.96 standard errors below the mean indicates possible poor performance.  
 Please note your performance rating may alter if other participants' results are amended.  
 No score penalty is incurred for non return of reports. However non return of results may be used as a measure of poor performance.



**Comments:**

Overall performance for this distribution was very good with 96.5% of participants reporting correct results.  
 28 sets of specimens were distributed. 27 participants returned results, with 12 participants not examining the specimens and one participant did not return results.  
 In the histograms on page 2 and subsequent pages, a maximum of 12 kits results are displayed: these include the most commonly used methods and the method(s) used in your laboratory indicated by an arrow. The figures in the histograms and those in the overall results tables may differ (1) due to exclusion of kits displayed in the histograms resulting in apparently lower numbers of data sets in the histograms or (2) due to participants using more than one kit resulting in higher numbers of data sets in the histograms.

**Turn around time:** The time taken to report your results was 0-days. This information is provided for your own use and does not form part of your performance assessment.

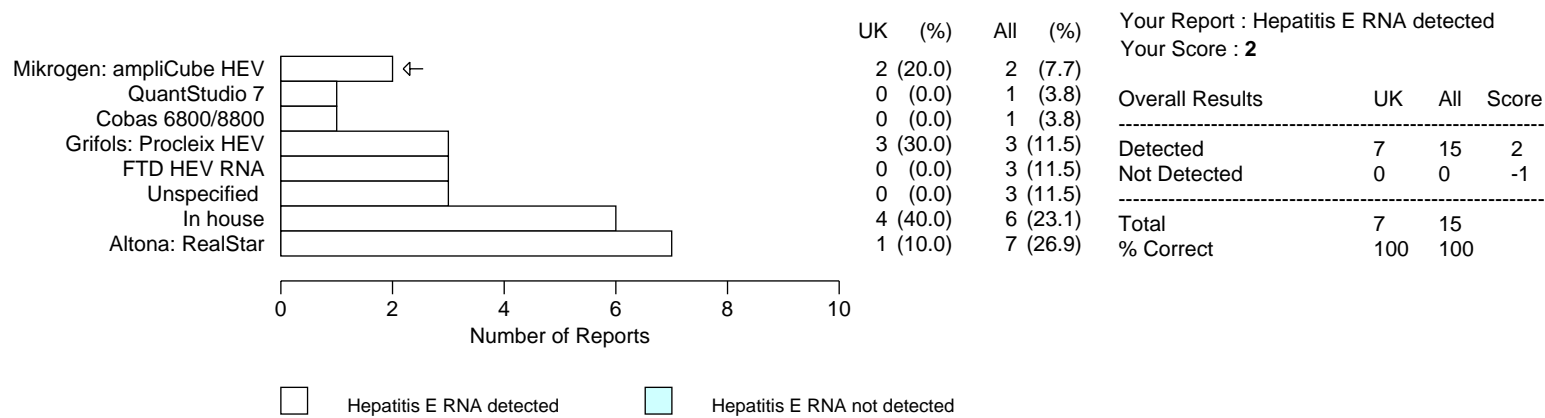
**Enquiries:** Pre-distribution test results are available should you experience a technical failure and wish to discuss the results. Written enquiries about this distribution should be addressed to Dr Beatrix Kele. For repeat specimen please request using the web form or e-mail [organiser@ukneqasmicro.org.uk](mailto:organiser@ukneqasmicro.org.uk) stating your laboratory identification number, the distribution name, distribution number, specimen number and reason for request.

**Acknowledgements:** We thank colleagues from NIS-PHE Virus Reference Department Colindale and NHSBT for their kind assistance with pre-distribution testing.

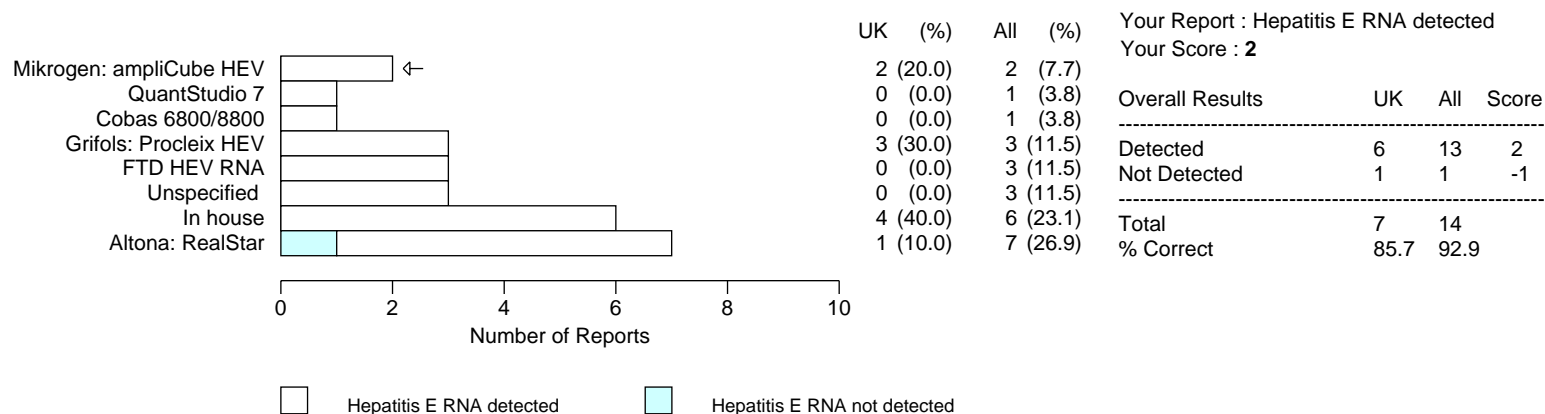


Two freeze dried plasma specimens were dispatched with a request for the detection of HEV RNA. Specimen 4697 consisted of a single donation positive for HEV RNA. Specimen 4698 was consisted of a single donation of HEV RNA positive diluted 1:2 in human plasma negative for HEV RNA.

**Specimen : 4697** Qualitative testing: Hepatitis E RNA detected



**Specimen : 4698** Qualitative testing: Hepatitis E RNA detected.



**Comment on distribution 4385**

In distribution 4385 a freeze dried plasma specimen pair was dispatched for the detection of HEV RNA. The expected viral load for specimen 4697 was 7619 IU/mL (log 3.88) and for specimen 4698 2540 IU/mL (log 3.40) with a **log difference** between the specimen pair of **log 0.48**.

In this distribution, 12 participants provided Ct values and nine participants provided quantitative values (expressed in IU/mL) for the specimen pair. Ct and quantitative values by methods are shown in tables below.

Assay name	Specimen 4697 Ct value	Specimen 4698 Ct value
In-house	31	33
	33.13	34.28
Altona: RealStar	32.65	Not reported
	29.88	31.83
	32.49	34.23
	33.51	33.96
	32.19	33.86
QuantStudio	32.97	34.54
Cobas 6800/8800	32.83	34.42
Unspecified	32.28	33.85
	31.6	33.4
	32.54	33.95
<b>Median</b>	<b>32.52</b>	<b>33.95</b>
Min	29.88	31.83
Max	33.51	34.54

Assay name	Specimen 4697 IU/ml	Specimen 4698 IU/mL	Log result of 4697	Log result of 4698	Difference between specimen pair
In-house	17466	24081	4.24	4.38	-0.14
	9898	3740	4.00	3.57	0.43
	3400	1500	3.53	3.18	0.35
Altona: RealStar	10600	Not reported	Not calculated	Not calculated	Not calculated
	7110	2154	3.85	3.33	0.52
	49300	14300	4.69	4.16	0.53
FTD: HEV	2841	1496	3.45	3.17	0.28
	754	546	2.88	2.74	0.14
Mikrogen: ampliCube HEV	4268	1018	3.63	3.01	0.62
Unspecified	3084	1222	3.49	3.09	0.40
<b>Median</b>	<b>5689</b>	<b>1500</b>			<b>0.40</b>
Min	754	546			
Max	49300	24081			

UK NEQAS for Microbiology is considering the implementation of the quantification aspect of HEV RNA detection. For this reason, please submit your quantitative results in future distributions if available.

