
PHE National Parasitology Reference Laboratory, Hospital for Tropical Diseases, 3rd Floor Mortimer Market, Centre, Capper Street, London WC1E 6JB, TEL: +44 (0) 207 383 0482, FAX +44 (0) 207 388 8985

Endolimax nana

Introduction

Endolimax nana is a small non-pathogenic amoeba with world wide distribution. Its life cycle is similar to that of *E. histolytica* but is non invasive.

Morphology of cysts

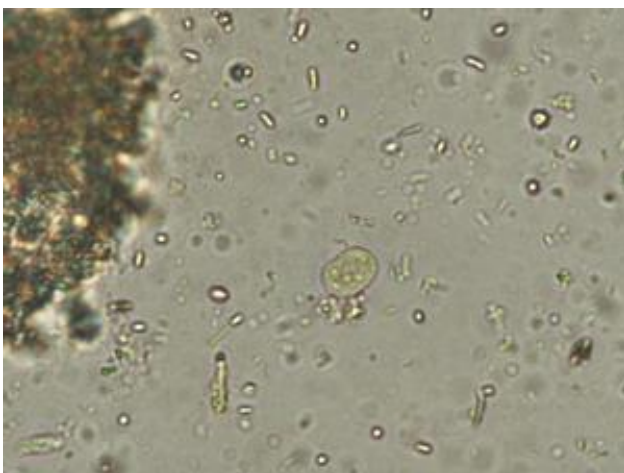
Cysts of *E. nana* are 6 - 9 μ in diameter. They can be spherical or ovoid in shape and contain 4 pin-point nuclei which are highlighted by the addition of iodine. Chromatoid bodies are not found and glycogen is diffuse.

Morphology of trophozoite

Trophozoites of *E. nana* measures from 6-12 μ . Motility is sluggish with blunt hyalin pseudopodia. In a permanently stained preparation, the nucleus exhibits a large karyosome with no peripheral chromatin on the nuclear membrane.

Laboratory Diagnosis

Laboratory diagnosis is made by finding the characteristic cysts in an iodine stained, formol-ether concentration method or by detecting the characteristic trophozoites in a wet preparation or a permanent stained preparation.



A cyst of *E. nana* displaying 4 pinpoint nuclei