
PHE National Parasitology Reference Laboratory, Hospital for Tropical Diseases, 3rd Floor Mortimer Market, Centre, Capper Street, London WC1E 6JB, TEL: +44 (0) 207 383 0482, FAX +44 (0) 207 388 8985

Entamoeba hartmanni

Introduction

Entamoeba hartmanni is a non-pathogenic amoeba with worldwide distribution. Its life cycle is similar to that of *E. histolytica* but it does not have an invasive stage and does not ingest red blood cells.

Morphology of cysts

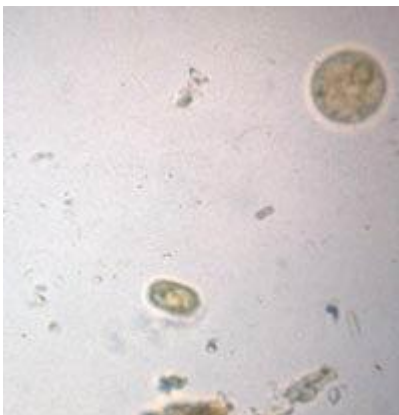
Cysts of *E. hartmanni* 7-9 μ in diameter and contain 1 - 4 nuclei. Chromatoid bodies are usually present in young cysts as elongated bars with bluntly rounded ends. Glycogen is usually diffuse, but in young cysts it is often present as a concentrated mass, staining reddish brown with iodine.

Morphology of trophozoites

Morphology of the trophozoites is similar to those of *E. histolytica/dispar* but they do not contain ingested red blood cells and the motility is less rapid.

Laboratory Diagnosis

Laboratory diagnosis is made by finding the characteristic cysts in an iodine stained, formol-ether concentration method or by detecting the characteristic trophozoites in a wet preparation or a permanent stained preparation.



A cyst of *Entamoeba hartmanni* displaying 1 nucleus